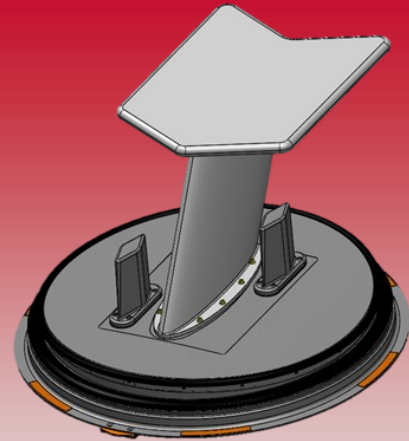




PART NUMBER:
0009A3000-10-170

V/UHF LOS + UHF SATCOM, Dual L, C, S Band & GPS Multi-Purpose Hatch System

- ▶ BILLET ALUMINUM CONSTRUCTION
- ▶ NO MODIFICATION TO AIRCRAFT
- ▶ FIELD REPLACEABLE SEALS AND HARDWARE
- ▶ FAA/DoD CERTIFIED
- ▶ HI ANGLE UHF SATCOM
CONTINUOUS LO ANGLE FREQUENCY
COVERAGE, 30-512 MHz
- ▶ DUAL L, S, C BAND ANTENNAS
- ▶ L1 AND L2 GPS



R4 Integration, Inc. (R4) has designed and built the next generation C-130 Multi-Purpose Hatch System (MPHS) for installing customized user configurations of airborne antennas or sensors. The 0009A3000-10-170 MPHS includes a rugged multifunction V/UHF LOS, UHF SATCOM, L, S, C Band and GPS antenna designed for airborne applications. By replacing the existing forward escape hatch, the MPHS provides the customer a “Roll On/Roll Off” communications capability **without modification** to the aircraft, allowing for rapid installation to meet short notice or critically needed communication capabilities. The MPHS is compatible with virtually any UHF/VHF/MILSAT communication system.

R4 provides a complete “Turn Key” solution to include a Portable Airborne Communication Terminal (PACT) that provides full 30—2000 MHz LOS, BLOS, Voice/Data capability with an integrated Intercommunication System for multiple operators, aircraft interface/control, and ground station capability.

SPECIFICATIONS

ELECTRICAL

Frequency	UHF Hi Angle : 240 - 400 MHz V/UHF Lo Angle : 30 - 512 MHz Dual L, C, S Band: 1610 - 1850 MHz 2400 - 2500 MHz 4400 - 5850 MHz GPS: 1564 - 1587 / 1216 - 1239 MHz
Gain (typical)	Hi Angle : +6.5 dBiC @ Zenith Lo Angle : -20 dBi @ 30 MHz -8.0 dBi @ 88 MHz -5.0 dBi average 118-174 MHz +2.0 dBi average 225 - 512 MHz L, C, S Band: +2.0 dBi GPS: +3.0 dBiC @ Zenith
RF Power	Hi Angle: 200 Watts CW Lo Angle: 50 Watts VHF 200 Watts (225-512 MHz) L, C, S Band: 50 Watts GPS: 1 Watt

MECHANICAL

Height Above Aircraft	12 Inches
Weight	29 LBS

R4 Integration, Inc.
45 Beal Parkway, NE
Fort Walton Beach, FL 32548
Patent # US 9,016,631 B2
FAA STC # ST02495LA

www.r4-integration.com
Email: info@r4-integration.com