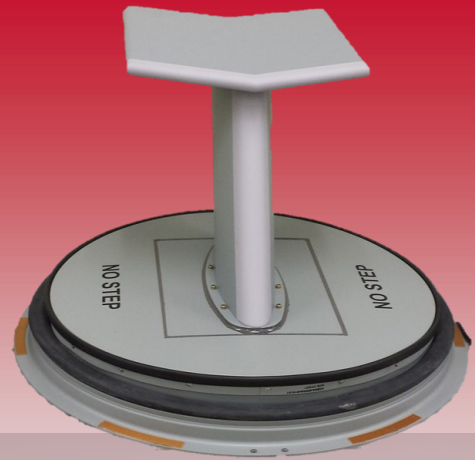




**PART NUMBER:**  
**0009A3000-10-190**

## **V/UHF/L-Band LOS + UHF SATCOM & GPS Multi-Purpose Hatch System (MPHS)**

- ▶ BILLET ALUMINUM CONSTRUCTION
- ▶ NO MODIFICATION TO AIRCRAFT
- ▶ FIELD REPLACEABLE SEALS AND HARDWARE
- ▶ FAA/DoD CERTIFIED
- ▶ HI ANGLE UHF SATCOM & MUOS COVERAGE
- ▶ CONTINUOUS LO ANGLE FREQUENCY COVERAGE, 30-2000 MHz
- ▶ L1 AND L2 GPS



R4 Integration, Inc. (R4) has designed and built the next generation C-130 Multi-Purpose Hatch System (MPHS) for installing customized user configurations of airborne antennas or sensors. The 0009A3000-10-190 MPHS includes a rugged multifunction V/UHF/L-Band LOS, UHF SATCOM and GPS antenna designed for airborne applications. By replacing the existing forward escape hatch, the MPHS provides the customer a “Roll On/Roll Off” communications capability *without modification* to the aircraft, allowing for rapid installation to meet short notice or critically needed communication capabilities. The MPHS is compatible with virtually any UHF/VHF/MILSAT/L-Band communication system.

R4 provides a complete “Turn Key” solution to include a Portable Airborne Communication Terminal (PACT) that provides full 30—2000 MHz LOS, BLOS, Voice/Data capability with an integrated Intercommunication System for multiple operators, aircraft interface/control, and ground station capability.

### **SPECIFICATIONS**

#### **ELECTRICAL**

<b>Frequency</b>	UHF Hi Angle : 240 - 385 MHz V/UHF/L-Band Lo Angle : 30 - 2000 MHz GPS: L1: 1564 - 1587 / L2: 1216 - 1239 MHz
<b>Gain (typical)</b>	Hi Angle : +6.5 dBiC @ Zenith Lo Angle : -18.5 dBi @ 30 MHz -8.0 dBi @ 88 MHz -1.0 dBi average 118-174 MHz +1.0 dBi average 225 - 2000 MHz GPS: +4.0 dBiC @ Zenith
<b>RF Power</b>	Hi Angle: 200 Watts CW Lo Angle: 50 Watts VHF 200 Watts (225-2000 MHz) GPS: 1 Watt

#### **MECHANICAL**

<b>Height Above Aircraft</b>	12.6 Inches
<b>Weight</b>	28 LBS

**R4 Integration, Inc.**  
**45 Beal Parkway, NE**  
**Fort Walton Beach, FL 32548**  
**Patent # US 9,016,631 B2**  
**FAA STC # ST02495LA**

**www.r4-integration.com**  
**Email: info@r4-integration.com**